

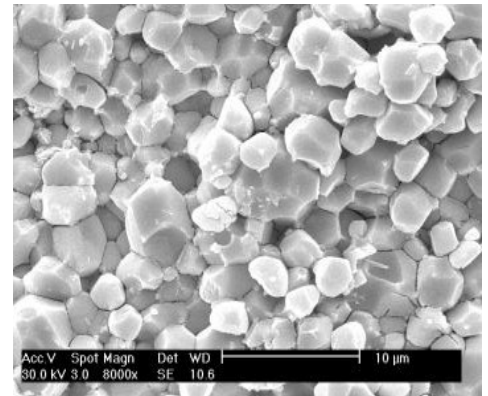
# ALPHA-4 FLUID

- Crystal clear color no odor
- High dielectric strength
- Highly efficient cooling properties
- Nontoxic
- Superior switching medium
- Compatible with mineral oil and PCB Fluids

## Synthetic Heat Transfer Fluid for Transformers, Switchgear and Ceramic Poling

Alpha-4 Fluid is a dielectric and heat transfer oil for special applications where operating temperatures are very high or ambient temperatures are very low. Made with 100% synthetic hydrocarbon oils, it is compounded with the most advanced antioxidants available. Providing excellent heat transfer characteristics and low-temperature properties, it has outstanding oxidation resistance.

Biodegradable and universally compatible with mineral transformer oil and standard insulation materials, Alpha-4 Fluid cools equipment better than other fluids. It is an excellent ceramic poling fluid. Due to its high quality, advanced base oils and oxidation inhibitors it provides longer service life at high temperatures



### Applications

- Excels where operating temperatures need to be controlled, in transformer-rectifier sets, load-break and tapchangers
- Chosen for use in overloaded transformers and viscosity-dampened switchgear
- Exceptional heat transfer characteristics insures equipment maintains low operating temperature
- Switchgear and tap changers mounted in transformers
- Chosen for use in ceramic poling processes due to its stable, clean base characteristics



### Soltex, Inc.

4 Waterway Sq. Pl. Suite 275  
The Woodlands, TX 7738  
281-587-0900  
orderentry@soltexinc.com  
Soltexinc.com



### TYPICAL CHARACTERISTICS - Compared with ASTM D3487, Guide for Mineral Insulating Oils

Characteristic & ASTM method	Alpha-4	ASTM Spec
Flash Point, D92, °C	220	145 max
Viscosity, D88, cSt. @ 100 °C	4.1	3.0 max
Specific Gravity, D1298, 20 °C	0.805	0.91 max
Pour Point, D97, °C	-66	-40 max
Appearance	Clear	Clear
Dielectric Breakdown, D1816, kV	58	35 min
Dissipation Factor, D924, 100 °C, %	0.01	0.30 max
Biodegradability (per BOD tests)	55-60%	---